

Engage Rotary



Change Lives

The CENTRO

Official Weekly Bulletin



**Rotary Club of Sta. Rosa Centro RI District 3820
Outstanding Club RY 2012-2013**

The Rotary Club of Sta. Rosa Centro meets at :

El Cielito Inn, Sta. Rosa-Tagaytay Road, Sta. Rosa, Laguna every Friday at 7:00pm

Club website: www.rcstarosacentro.org

Club e-mail : rcstarosacentro@outlook.com

Rotary Year 2013-2014

Executive Officers

Teodora Lucero	President
Mayor Arlene Arcillas	President Elect
Delphi Penelope Cuya	PN/Vice President
PP Priscila Dela Cruz	Secretary
Myrna Valle	Executive Secretary
IPP Joel Liza Pineda	Ex-Officio
Ma Geralyn Dee	Treasurer
PP Cheryl Lu	Sergeant-at-Arms
PP Zenaida Dictado	Finance

Committee Chairs

Evelyn Laranga	Club Service Projects
PP Carolina Salvahan	Membership
Myrna Valle	Public Relations
Delphi Penelope Cuya	Club Admin
IPP Joel Liza Pineda	The Rotary Foundation
PDG Consuelo Lijauco	Training/Club Trainor
PP Elenita Lantin Ma	Asst. Club Trainor
Annaliza Maglian	Community
PP Maryann Gonzales	Vocational
PE Mayor Arlene Arcillas	International
PP Hazel Ramos	Youth
PP Maya Grace Padiernos	Special



The CENTRO

Official Weekly Bulletin

Rotary Club of the West Centre Rt District 3220

Outstanding Club RY 2012-2013



The Rotary Club of the West Centre is proud to be
a member of the West Centre Rt District 3220.
Our goal is to help our community.
Thank you for supporting our efforts.

Inside this Issue

	Page #
Program	4
Invocation	5
Object of Rotary	5
The Four Way Test	6
Centro Hymn	6
President's Message	7
Rotary International Updates	8
Reflections	9
Rotary Basics	10-11
Glimpses	12-15
Minutes of the Meeting	16-17
For your information	18-19
What's coming up	20
Next week's order of Business	21
Fun page	22
Roster of Members	23
Special Observances	24

**The Rotary Club of Sta. Rosa Centro
Regular Weekly Meeting
El Cielito Inn**

**P R O G R A M
January 10, 2014**

Call to Order	Pres. Doray Lucero
Invocation	Rtn. Jennifer Dee
National Anthem	Rtn Glo Bedienes
The Four Way Test	Rtn Myrna Valle
Object of Rotary	PP Carol Salvahan
Acknowledgment	PP Jacqui Victoria
Recognition	PP Che Lu
Secretary's Report	PP Precy dela Cruz
Treasurer's Report	Rtn. Geralyn Dee
Committee Reports	Committee Chairpersons
President's Time	Pres. Doray Lucero
Centro Hymn	

**Chairwoman of the Night :
PE Pen Cuya**

**If any person is unable to fulfill their positions as above please
make arrangements with another Rotarian to take your place.**

INVOCATION



Creator and sustainer of all, accept our thanks for this day and all its blessings. We ask that you guide and direct our club, its leaders and our actions. Grant that each of us may feel our responsibility to Rotary, to our community, to our country. Bless our fellowship today in your service. Amen.



THE OBJECT OF ROTARY

THE OBJECT OF ROTARY IS TO ENCOURAGE AND FOSTER THE IDEAL OF SERVICE AS A BASIS OF WORTHY ENTERPRISE AND, IN PARTICULAR, TO ENCOURAGE AND FOSTER:

1. THE DEVELOPMENT OF ACQUAINTANCE AS AN OPPORTUNITY FOR SERVICE;
2. HIGH ETHICAL STANDARDS IN BUSINESS AND PROFESSIONS; THE RECOGNITION OF THE WORTHINESS OF ALL USEFUL OCCUPATIONS; AND THE DIGNIFYING OF EACH ROTARIAN'S OCCUPATION AS AN OPPORTUNITY TO SERVE SOCIETY;
3. THE APPLICATION OF THE IDEAL OF SERVICE IN EACH ROTARIAN'S PERSONAL, BUSINESS, AND COMMUNITY LIFE;
4. THE ADVANCEMENT OF INTERNATIONAL UNDERSTANDING, GOODWILL, AND PEACE THROUGH A WORLD FELLOWSHIP OF BUSINESS AND PROFESSIONAL PERSONS UNITED IN THE IDEAL OF SERVICE.

♪♪♪*Sweet Rotary♪♪♪
(The Centro Hymn)

When it began
I can't believe it happened
But then I know it's going strong
2001

That's when it came to being
Who'd have believed we'll grow to
be...

Hands, touching hands
Reaching out, touching me, touch-
ing you

Sweet Rotary
Sta. Rosa Centro's good
I've been inclined
To believe we're going strong
And now, I...

Look all around
So many help is needed
C'mon, together I know we could

And when we hurt,
We can just smile and bear it
'Coz we were born to serve and be....

Warm, touching warm
Reaching out, touching me, touching you
Sweet Rotary
Sta. Rosa Centro's good
We're going strong
We are here for all of you
Sweet Rotary Sta. Rosa Centro's...
GREAT!



The 4-Way Test
Of the things we
think, say or do

- 1. Is it the TRUTH?**
- 2. Is it FAIR to all concerned?**
- 3. Will it build GOODWILL and BETTER FRIENDSHIPS?**
- 4. Will it be BENEFICIAL to all concerned?**





President's Message

Greetings dear Centro ladies!

Each New Year always brings a sense of hope, resolve and expectation. Let us look at this new year with renewed energy.

Today is our 1st fellowship meeting for the year and this will strengthen the bonds shared by Centro Ladies and invigorate us for our projects this year. One of our bigger projects this year is our Buntis Wellness to be held on March 15.

May I also remind everyone on the international convention that will be held in Sydney, Australia. If you are interested, please let me know so that we can forward our response to his office.

A Happy New Year to all and God bless!

Yours in Rotary service,

First Class President Teodora "Doray" Lucero

Rotary



ROTARY INTERNATIONAL

Updates

Ron D. Burton
2013-14 RI President



President's Message for January 2014

We often talk about Rotary as an extended family, with all of its branches and generations. We value our youth program participants and alumni as important members of the Rotary family, and we place a special emphasis on service to children and families. We do this because we know that for any family, the youngest generation is the future. That is absolutely true for us in Rotary.

We know that it is essential for us to bring in a new generation of younger Rotary members. We've spent a lot of time talking about how to attract young professionals to Rotary – but perhaps we haven't talked enough about why they don't stay.

There are plenty of young people, some of them youth program alumni, who do join Rotary. But when they begin families of their own, many of them leave. It isn't hard to see why: These are young professionals who are already spending more time than they want to away from their families. No matter how much they love and value Rotary, they are not going to prioritize their Rotary service over their spouses and children.

Nor should we ever expect them to. This is why it is so important for us to find ways to welcome families into Rotary, so that Rotary and the family are never in competition for a Rotarian's time. Whether it's by planning service projects that involve the whole family, or providing child care during meetings, or being flexible about meeting places and times, we need to make Rotary service a viable option for those with young children.

When you welcome families into Rotary, you're saying: Your family is not an obstacle to your Rotary service. They're not something that has to be scheduled around. Instead of mom or dad going out to Rotary and leaving everyone else at home, Rotary goes on the family calendar. The family of Rotary is real. Those children are going to grow up seeing their parents involved in community service, and being involved in service themselves. Not only is that a great thing for the family – it's a great thing for the Rotary club, which will be helping to nurture a new generation of active, service-minded young members.

At every stage of our lives and our careers, Rotary has something for all of us – a way to let us do more, give more, and be more. Rotary is big enough for us all.



Reflections

"Love is mightier than hate. Give it one half the advertising that hate has had and there will be no more war".



Paul Harris

The
Rotarian magazine, February 1935

"Science has broken down the barriers between people, but that merely accentuates our problems, particularly those which arise out of misunderstandings, unless there is also a spiritual growth. For every shortening of the distance between peoples there must be a broadening of human sympathies." — New Year — New Thinking, THE ROTARIAN, January 1933

LET US INTRODUCE YOU TO
OUR ROTARY.

ROTARY BASICS

Benefits and Responsibilities of Club Membership

The club is the cornerstone of Rotary, where the most meaningful work is carried out. All effective Rotary clubs are responsible for four key elements: sustaining or increasing their membership base, participating in service projects that benefit their own community and those in other countries, supporting The Rotary Foundation of RI financially and through program participation, and developing leaders capable of serving in Rotary beyond the club level. What Rotarians get out of Rotary depends largely on what they put into it. Many membership requirements are designed to help members become and remain active participants in their clubs, and enjoy their Rotary experience.

Service

All Rotary clubs share a key mission: to serve their community and those in need throughout the world. By participating in club service projects, members learn about their club's involvement in local and international projects and can volunteer their time and talents where they are most needed.



ROTARY BASICS

Membership recruitment and retention

To keep clubs strong, every Rotarian must share the responsibility of bringing new people into Rotary. Even new members can bring guests to meetings or invite them to participate in a service project. The value of Rotary speaks for itself, and the best way to engage the interest of potential members is by letting them experience fellowship and service firsthand. Keeping members interested in Rotary is another responsibility. Good club fellowship, early involvement in service projects, and involvement in club operations are some of the best ways to sustain the club's membership. The ideal composition of a Rotary club reflects the community's demographics, including professions, gender, age, and ethnicity. Such diversity enriches every aspect of the club's fellowship and service.

Attendance

Attending club meetings allows members to enjoy their club's fellowship, enrich their professional and personal knowledge, and meet other business leaders in their community. Club meeting times vary to accommodate members' family and professional commitments. Some clubs meet at lunchtime, while others meet in the early morning, after work, or in the evening. Rotary policy requires members to attend at least 50 percent of club meetings in each half of the year. If members miss their own club's meeting, they're encouraged to expand their Rotary horizons by attending make-up meetings at any Rotary club in the world — a practice that guarantees Rotarians a warm welcome in communities around the globe.



Glimpses

Centro's Wig Christmas Party
December 21, 2013
Jeannie's Touch, Sta. Rosa, Laguna



Glimpses





Glimpses

Welcome to Centro
DRA. SALANDANAN





For your Information

Centro's PP Mean Gonzalez
and Mel Tadeo at the 2013
Taipei Rotary Institute





Minutes of the Meeting

Regular Meeting

December 13, 2013, Friday

Marina, Garden Villas

Sta. Rosa City

The meeting started at 7:20 p.m. There were 13 attendees, namely:

President Doray

PP Zeny

PP Che

PP Carol

PP Jackie

PP Mean

PN Pen

Rtn Evs

Rtn Joen

Rtn Mel

Rtn Glo

Rtn Jay

Rtn Jen

1. The Face of Rotary

- a). Pres Doray was asking on whether the club will still proceed with the project since to date, there are no applicants yet.
- b) PP Zeny's opinion is that if there are no participants yet, then the project may have to be cancelled since there is not enough time to convince the other clubs to join.

Minutes of the Meeting

- c) As a final effort to encourage participants, it was decided that:
 - A tarpaulin will be displayed during the District Christmas Party on December 15
 - Likewise on the same event, flyers will be distributed and Pres, Doray, PP Jackie, IPP Liza and Rtn. Evs, who will be attending the event will explain and convince other clubs to participate
 - Clubs who are near Sta. Rosa will be personally visited

2. Club Christmas Party

Details of the club Christmas party were finalized. Final date is December 21, 2013 at the ground floor of IPP Liza's office. Theme is wig party and families of members are welcome to join. (a separate document will be prepared for the individual assignments)

3. Buntis Wellness

Pres Doray informed everyone that 2014 Buntis Wellness will be huge. Targeted ligations and papsmear will be 30 persons each procedure. Since we will be needing medical equipments for the ligation, the venue would be at Doray's Paanakan. Project implementation date is March 15.

3. President's Report

a) PP Maan reminded Pres Doray to include the ff activities in her report

- Taipei Zone Institute attended by PP Mean and Rtn Mel

- Wodonga Sister Club visit by AG Leni

b) PP Maan and Rtn Mel will also be attending the



For your Information

World's biggest arena is in the Philippines



“The largest domed theater on the planet” is also the newest coliseum in the Philippines, and it’s nearing completion in Bocaue, Bulacan, to be unveiled – possibly with 50,000 people in attendance – to herald the centenary of Iglesia ni Cristo.



For your Information

It was a riveting show on the Discovery channel as architect Andrew James guided the viewer on a tour of the amphitheater that occupies 34,000 sqm (its dome takes up 36,000 sqm, "the biggest roof space in the world"), coupled with the insights provided by Renato Solidum, earthquake expert of Phivolcs. The Philippine Arena, as it was referred to throughout the one-hour program on television, is touted as earthquake-proof even if it sits a mere 30 km from the (Marikina) West Valley Fault, even if 90 percent of the world's earthquakes are generated around the Pacific ring of fire. But then as Dr. Solidum put it, "earthquakes don't kill people, buildings do."

This "record-breaking manmade marvel" started out as a plenary hall for the INC church and the contractors, San Jose Builders, were given 24 months to finish the job, "a deadline that we cannot move." Quake-proofing the arena, said Mr. James, means flexibility in every inch of the structure but also ensuring the safety of people moving in and out and watching the show. Not only through "crowd management on a massive scale," but also by making sure there are no bottlenecks, no panic, no stampedes when they make a mad dash for the exits – via the concourse and stairs -- during an emergency. Evacuation time: between four and six minutes.

Built 62 meters above the ground and looking like a crown (to the architect but like a giant clam to me), already the arena is whipping up waves of excitement among performers. As singer Julia Abueva said, "entertainment is big in the Philippines." That's why we need a big stage and a big theater (in this case, 140 meters from the back to the stage) for a big audience. Boxing fans could also dream of watching their idol Manny Pacquiao savage his next opponent in this structure that its designers brag as one that combines "majesty with intimacy."

That said, let the earthquake expert have the last word: "We are ready to rumble with the tumble." Without a stumble.

Source: <http://ph.news.yahoo.com/inc-arena-planet-39-biggest-220048263.html>



What's coming up?

Friday, January 10

Happy Birthday!! PP Leni Ma

Regular Weekly Meeting

Friday, January 17

Regular Weekly Meeting

Friday, January 24

Regular Weekly Meeting

Friday, January 31

7:00pm Board Meeting

Wednesday, February 12

Happy Birthday!! - PN Pen Cuya

Saturday, February 22

Rotary Week Celebration

Sunday, February 23

Rotary Week Celebration

Monday, February 24

Rotary Week Celebration

Tuesday, February 25

Rotary Week Celebration

EDSA Revolution Day

Wednesday, February 26

Rotary Week Celebration



Next Week's Order of Business

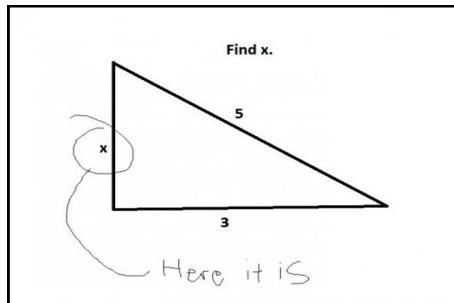
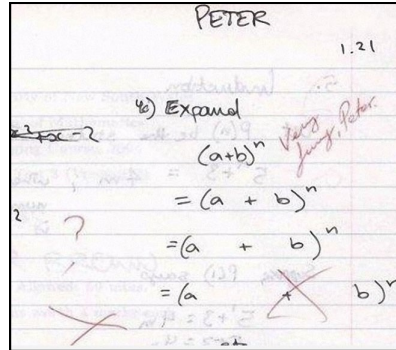
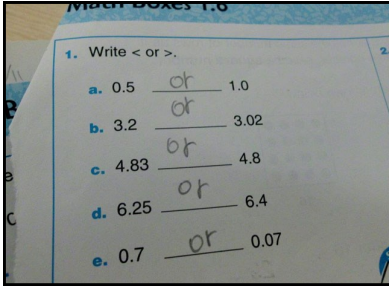
**The Rotary Club of Sta. Rosa Centro
Regular Weekly Meeting
El Cielito Inn**

**PROGRAM
December 13, 2013**

Call to Order	Pres. Doray Lucero
Invocation	Rtn Sheila Santillan
National Anthem	Rtn Myrna Valle
The Four Way Test	Rtn Myrna Valle
Object of Rotary	IPP Liza Pineda
Acknowledgment	PP Jacqui Victoria
Recognition	PP Che Lu
Secretary's Report	PP Precy dela Cruz
Treasurer's Report	Rtn. Geralyn Dee
Committee Reports	Committee Chairpersons
President's Time	Pres. Doray Lucero
Centro Hymn	

**Chairwoman of the Night :
AG Leni Ma**

Test Answers That Are 100% Wrong But Totally Genius At The Same Time





Roster of Members

	NAME	ID No	CLASSIFICATION	BIRTHDAY	E-MAIL
1	Arcillas, Arlene "Mayor"	8275828	City Representative	31-Jul	arlene.arcillas@gmail.com
2	Bedienes, Gloria "Glo"	8612318	Trading	14-Apr	g_delbarrio@yahoo.com
3	Cuya, Delphi Penelope "Pen"	8275831	Healthcare	12-Feb	c_dpenelope@yahoo.com
4	Dee, Ma Geralyn "Jay"	8574451	Interior Design	9-Dec	geralyn_dee@yahoo.com.au
5	Dee, Jennifer		Healthcare		jenmd320@yahoo.com
6	Dela Cruz, Priscila "Precy"	5333454	Leasing	24-Aug	pre_z@yahoo.com
7	Delfino, Goyena "Joan"	5333469	Catering	27-Feb	joendelfino@yahoo.com
8	Dictado, Zenaida "Zeny"	6416676	Pallet Manufacturing	14-Sep	zendictado@yahoo.com
9	Gabatan, Ma. Cecilia "Cecile"	8612321	Real Estate Broker	27-Oct	ana_ciariz06@yahoo.com
10	Gonzales, Mary Ann "Ma An"	5333525	Real Estate Developer/Brokerage	20-Mar	moonzales_964@yahoo.com
11	Laranga, Evelyn "Evs"	8465660	Education	25-Jul	larangayves@yahoo.com
12	Lijauco, Consuelo "Chit"	5333445	Magazine Editing	15-May	chitli@yahoo.com
13	Lu, Cheryl "Che"	5333496	Pest Control Services	17-Apr	cheanton2004@yahoo.com
14	Lucero, Teodora "Doray"	8045358	Midwife	18-Sep	teodora_lucero@yahoo.com
15	Ma, Elenita "Leni"	6261683	Dentist	10-Jan	docleni110@yahoo.com
16	Maglian, Annaliza "Kap Itzhel"	4656628	Government Service	15-Jul	amaqlian@yahoo.com
17	Padiernos, May Grace "Maya"	5944127	Furniture Retail	6-May	mavapadiernos@yahoo.com
18	Pineda, Joel Liza "Liza"	7019336	Human Resource	30-Mar	joellizaineda@yahoo.com
19	Ramos, Hazel "Hazel"	6165816	Money Lending	1-Jul	hazel_agnes1968@yahoo.com
20	Salvahan, Carolina "Carol"	5333457	Window Fashion Contractor	4-Jul	cvsalvahan47@yahoo.com
21	Santillan, Shiela "Shiela"	8574457	Restaurateur	2-Apr	shiela402@yahoo.com
22	Tadeo, Carmela "Mel"	8415873	Logistics	24-Dec	carmela@qnf.com.ph
23	Valle, Myrna "Myrna"	8482805	Strategic Planning	21-Dec	mvrna.valle@yahoo.com
24	Victoria, Jacqueline "Jackie"	6556182	Watch Services	7-Nov	ustyle04@yahoo.com



Special Observances

July 2013	Start of Rotary Year/Public Relation Month
August 2013	Membership & Extension Month
September 2013	New Generation Month
October 2013	Vocational Month
November 2013	The Rotary Foundation Month
December 2013	Family Month
January 2014	Rotary Awareness Month
February 2014	Rotary Anniversary
March 2014	Literacy Month/ World Rotaract Week
April 2014	Magazine Month
May 2014	Rotary Trainings
June 2014	Rotary Fellowship Month

